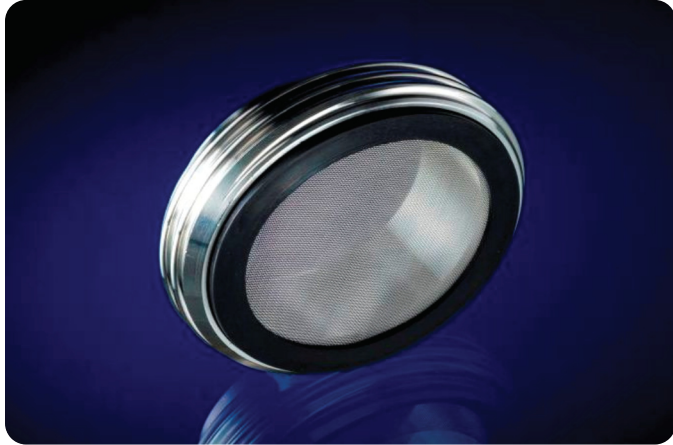
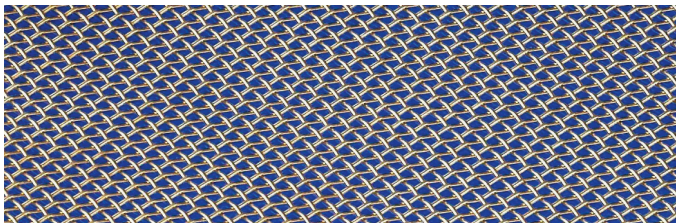


SMS-L Milkthreadcoupling Screens



We are pleased to introduce the first SMS-L screens. This well known fitting for the food and dairy industries in Europe has proven its value over the years. The use of screens in the pharmaceutical market with Tri-Clover based gaskets is significant.

The lobe, and Centrifugal pumps are popular pumps in the food industry, but can easily be damaged in a start-up phase. Small parts dropped in the system can destroy a pump in no time. Time to use of these screens(filters).



	d1	d2	d3	S
DN25	32	25	22.6	5.4
DN38	47.5	38	35.5	5.6
DN51	60.6	51	48.6	5.6
DN63	73	63.5	60.6	5.6
DN76	85.5	76	73.1	5.6
DN104	115	108	99.8	5.6

Material: EPDM, FKM (BUNA)
Size: DN25 - DN104
Screen Material: 316SS
Meets: FDA 177.2600
 Animal derived ingredient free
Mesh sizes: 10 & 20



Sanitary Pumps

Applications:
 Inline fluid conditioning
 Protection during start-up testing phase with new systems
 Pump protection

Mesh (wrap)	WireØ (mm)	Opening (mm)	Open Area (%)	Material
6	0.9	3.333	62	AISI 316
8	0.7	2.475	61	AISI 316
10	0.6	1.94	58	AISI 316
20	0.34	0.93	54	AISI 316
40	0.22	0.415	43	AISI 316
60	0.19	0.233	30	AISI 316
80	0.17	0.148	22	AISI 316
100	0.112	0.142	31	AISI 316

